

# FRIENDS OF THE HIGHWAY GALLERY

**Newsletter - October, 2017      Convenor: Marie Donald**

## *Message from the Convenor*

It is with regret to inform you of the passing, 2 weeks ago, of our dear Friend Jean Jamieson. Daughter, Karen gave us the sad news. Since Jean was not able to drive it was Karen who would bring her mother to the Coffee Mornings. Jean who had been a most regular attendee at our First Monday event was a quiet and very faithful member.

We have had some good articles in the Burwood Bulletin this year especially the Spring issue with Margaret Landvogt's picture on the front cover. In the last few months the Council Bulletin has also featured current Exhibitions.

## **Friends' Coffee Mornings**

**1st Monday of each month 10:30 am to 11:30 am**

### **Report: Monday September 4 - Landvogt Exhibition**

During the Landvogt Exhibition we were looking forward to Margaret being the Guest Speaker at our September Coffee Morning. However the virus, which has hit many of us, prevented Margaret from attending. She wrote a story which was read out and we enjoyed seeing the Exhibition. Her Exhibition featured Australian wild flowers, very appropriate for September when many Wild Flower Shows are on.

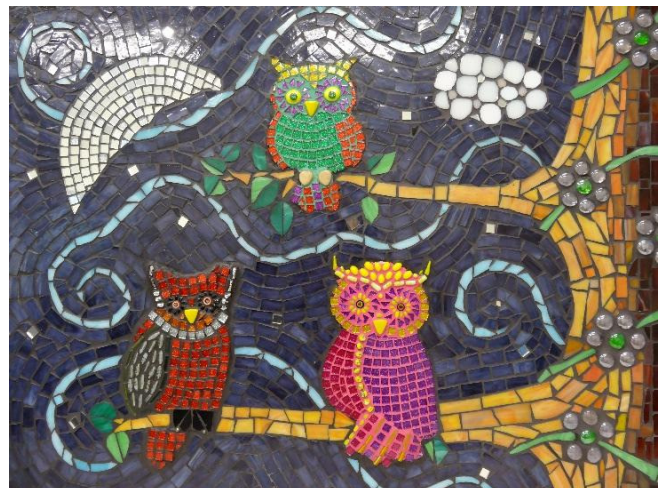
Daughter, Kathy Landvogt exhibited a delightful display of paintings.

**Fiona Nicholson Stocker, Secretary of Team HG**, gave us an update on the progress with the Gallery Incorporation and other related matters of which you had received notification and a vote was taken on acceptance of The Highway Gallery Inc

### **Monday October 2 - Speaker Jill Feinberg**

**"SOMETHING SPECIAL"** the annual exhibition of Art & Craft by the tutors and students of Mount Street Neighbourhood House has been in the Gallery for the last few weeks and due to finish the Sunday prior to our Coffee Morning. However, as Jill Feinberg, Mount Street NH Co-ordinator agreed to be our Speaker next Monday, talking about the Exhibition, the display will be still on the walls.

The display is made up of over 100 exhibits including Watercolour, Oil and Acrylic Painting, Pastels, Decoupage, Knitting, Crochet, Mosaic, Paper Tole, Patchwork, Quilting and more. Some exhibits will be for sale. Enquiries 9803 8706 or 0417 146 394





## Current and Forthcoming Exhibitions and Event



### "ART EXTRAVAGANZA" Oct 4 to 8

#### Mount Street Neighbourhood House

This one week Exhibition and Sale of Art and Craft from the students and tutors of Mount Street NH will be an opportunity for you to see and purchase some of the work of these artisans.

All paintings and craft work will be reasonably priced and cover a range of media including Acrylic, Oil, Pastel, Mosaics, Patchwork, Paper Tole, Quilting, and more. There will be framed and unframed paintings. Enquiries: 9803 8706

### Echo and Students - Chinese Brush Painting

Oct 11 to 22



Showcasing Chinese Brush paintings/calligraphy artworks from 70 students and examples by their Teacher, Echo Wu.

Students are from various culturally ethnic backgrounds, with just a few months to 7 years of learning.

11 am - 4 pm, Wednesday to Monday, Tuesday closed

(note : The change of Gallery opening times for this exhibition only)

**Official Opening:** Sunday October 15, 2pm - all welcome.  
when there will be workshops for adults and children.

### Celebrating National Children's Week through Art

Oct 25 to 29

Artworks created by 3 & 4 year olds from **Highmount Preschool**. This is the Bi-Annual exhibition so that each child has the chance to exhibit in a Community Gallery at least once whilst attending **Highmount**.

Craft for Kids available during the Exhibition

Flyer enclosed

### Feats of Clay - Valley Potters

November 1 to 19

Valley Potters are a strong and dynamic group of potters, from various parts of Victoria who always amaze with their creative work. We look forward again this year to their Exhibition at the Gallery. This charming venue displays extremely well the high standards of craftsmanship as we saw in their Exhibition last year.

Watch for more details in your November NLR or check the website - [valleypotters.org.au](http://valleypotters.org.au)

**Shadows and Light** - Amaroo Neighbourhood Centre, Oct 6 to 7- 9am to 4pm, 34 Amaroo St, Chadstone

**Salford Park Annual Fete, Saturday October 7, 100 Harold St, Wantirna**

The Secretary of Salford Park Art and Craft Group, Yvonne Gray, has been a long time member of the HG Friends. Each year Salford Park put a collection of their hand made works in our Festive Gifts Exhibition.

**The Highway Gallery, 14 The Highway, Mount Waverley 3149**

Enquiries: [mrg2009@live.com.au](mailto:mrg2009@live.com.au) 0417 146 394 <https://highwaygallery.wordpress.com>  
<https://www.facebook.com/TheHighwayGallery/> NB TheHighwayGallery without hyphens  
Opening times - Wednesday to Sunday 12:00 noon to 4:00 pm or by arrangement